

# the home front

Spring 2016

[www.wregional.com/csh](http://www.wregional.com/csh)

## It Takes a Village to Make this Possible

Every class offered, all of the items in our boutique, and the individual support given daily at the Cancer Support Home would not be possible without the dedication of volunteers, staff, donors, and partners. Thank you to every person who has given their time, expertise, and money to make the Cancer Support Home what it is today. It truly does take a village to run our Home and we are so thankful to all who make this possible. Thanks to your dedication, the Cancer Support Home provided 2,633 services in 2015:



- 287 people received items from the boutiques
- 58 people received financial assistance through Cancer Help Fund and the Colon Cancer Outreach Program
- 138 services were provided through No Excuses
- 1,235 services were provided by our Breast Health Navigation Team
- 293 people attended support groups
- 248 counseling sessions were provided
- 657 nights of lodging were accumulated

Most of all, we want to thank the thousands of people who have walked through our front doors and invited us into their cancer journey. They are our inspiration and we are thankful for the privilege of serving them.

## Thank You, Jenny

A special thank you to Jenny Coogan for 20 years of service at the Cancer Support Home. Jenny donated 2,256 hours of her time to assisting cancer patients and their families. We are sad to see her go, but are so thankful for the privilege of serving with her.

Since the Cancer Support Home first opened, volunteers have helped answer phones, greet guests, assist clients in the boutique, and perform a variety of other tasks. In 2015, volunteers recorded 1,495.25 hours at the Cancer Support Home.



**We are always looking for more volunteers. Contact us to learn more!**

# MOSAIC

## MOSAIC

Artful expression for the Cancer journey



The Cancer Support Home, in conjunction with the Community Creative Center, is proud to introduce the spring programming schedule for our Mosaic art program. These classes are available to Cancer patients and survivors as a healthy outlet and creative experience.

For more information, or to sign up for a class, please call 479.521.8024. Classes are free, but registration is required.

### MOSAIC Spring Programming ~ April-June

#### Fayetteville:

Date	Day	Time	Class	Instructor
April 8 <sup>th</sup>	Friday	10am-Noon	Arkansas Mosaic Wall Hanging	Lisa Suit
April 19 <sup>th</sup>	Tuesday	6-8pm	Clay Plates/Serving Dishes	Maura Miller
May 4 <sup>th</sup>	Wednesday	10am-Noon	Found Object Mosaics	Lisa Suit
May 17 <sup>th</sup> & 24 <sup>th</sup>	Tuesday	6-8pm	Clay Cookie Jars	Maura Miller
June 4 <sup>th</sup>	Saturday	2-4pm	Clay Mugs	Bryce Brisco
June 16 <sup>th</sup> & 23 <sup>rd</sup>	Thursday	6-8pm	Figure Drawing	Sean Fitzgibbon

#### Bentonville:

Date	Day	Time	Class	Instructor
April 21 <sup>st</sup>	Thursday	6-8pm	Watercolors	Leana Fischer
June 1 <sup>st</sup>	Wednesday	11am-1pm	Jewelry	Marietta Camillieri

## Program Staff



### Grace — Program Coordinator

Grace became our new Program Coordinator at the Fayetteville Cancer Support Home in October 2015.



### Susy — Breast Health Educator & Support Specialist

"Susy Started in December 2015. Susy previously worked for UAMS and has eight years of experience as a Breast Health Educator. She works primarily at our Bentonville location.



### Jaclyn — Director of Development & Outreach Services

Jaclyn serves as the Director of the Cancer Support Home as well as Washington Regional's Faith in Action Program.



### Misty — Breast Health Navigator

Misty serves as a Breast Health Navigator and works with patients from diagnosis into survivorship. Misty is a RN and works closely with patients to help ensure they have the support and resources they need.



### Adela — Breast Health Navigator

Adela started in June 2015 as our Bilingual Breast Health Navigator. Adela previously worked for Hope Cancer Resources for five years and is a Licensed Social Worker.



### Ryan — Manager

Ryan serves as the Manager for the Cancer Support Homes as well as Washington Regional's Faith in Action program.

# Colon Cancer Awareness

Colon cancer is the third most common cancer in both men and women in the United States and nationally is the second leading cause of cancer related death. Each year approximately 1,475 new cases of colon cancer are diagnosed in Arkansas. Thankfully, due to early screenings and improved treatments, survivorship has increased greatly over the past 20 years. If you are over age 50 or think you are at a higher risk for colon cancer, get screened today.

## *Ryan Murphy Fund*

The Ryan Murphy Fund was created in 2005 in memory of a Rogers resident who passed away from colon cancer at age 27. Over the last 10 years, more than \$100,000 has been raised to support those who do not have insurance or cannot afford a colonoscopy. Thus far in 2016, the Cancer Support Home has helped seven individuals receive a colonoscopy.



## Support Groups & Counseling

- Coping and Conversations - every Wednesday (F) noon
- Oral, Head and Neck Cancer (SPOHNC) - 3rd Saturday (F) 10:00 a.m.
- Survivor's Circle - 1st and 3rd Monday (F) 5:30 p.m.
- Women with Cancer - 2nd Monday (B) 5:30 p.m.
- Support for Hispanic Women - 1st Tuesday (F) 5:30 p.m.;  
3rd Tuesday (B) 1:00 p.m.

(F) Fayetteville Cancer Support Home, 1101 N. Woolsey 479.521.8024

(B) Bentonville Cancer Support Home, 2706 E. Central 479.273.2257

**Free counseling appointments  
are available for cancer  
patients and their families.  
Please call to make an  
appointment.**

**479.521.8024**

## Making a donation

If you were able to make a gift that would provide hope and comfort to cancer patients and their families as they walk the unfamiliar road of cancer diagnosis and treatment, would you do that? If you could make such a gift without impacting your cash flow, lifestyle or family security, would you consider doing that?

Well, you can make such a gift. A gift in your will or trust is a creative and easy way to enable the Cancer Support Home to continue serving the unique needs of cancer patients and their families for years to come. The Cancer Support Home offers education, cancer screenings, support groups, wig and prosthesis boutiques, overnight lodging and financial assistance to cancer patients and their families at no cost.

You don't have to be wealthy to have a will or leave a gift. Everyone has an estate, large or small. And making a gift in your will allows you to leave an enduring statement about your values and serves as a lasting example for your family and others to follow. To learn more about making a deferred gift to support the Cancer Support Home, contact Nancy Cozart at 479.463.2111, [ncozart@wregional.com](mailto:ncozart@wregional.com) or visit [www.wregional.giftlegacy.com](http://www.wregional.giftlegacy.com).



WASHINGTON REGIONAL  
**LEGACY SOCIETY**

# Upcoming Events

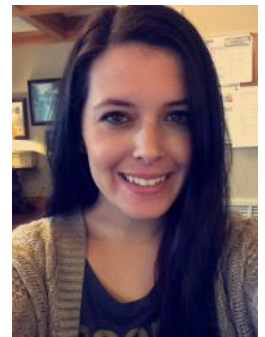
Each year there are a few key events that help raise awareness and funding for cancer support, treatment, and research. Three such events are the Komen Ozark Race for the Cure on April 30, the Relay for Life on July 14, and the Cancer Challenge event on June 6-11. The Cancer Support Home works closely with each of these organizations, and we hope that you will join us in participating in their events. You can follow the links below to learn more about volunteering and participating in these great events.



# Intern Spotlight

The programs and services provided by the Cancer Support Home are made possible through the efforts of our volunteers and interns.

In the Spring 2016 semester, the Cancer Support Home is hosting an intern from the University of Arkansas. Jessica is pursuing a degree in Public Health with a minor in Business. She assists clients at the home on busy mornings and will also facilitate some support groups this semester.



# Our Mission

*Our mission is to provide hope and comfort to those learning to live with cancer.*

The Cancer Support Home relies on grants and gifts from individuals to provide services to hundreds of citizens in our community. If you would like to help us continue to offer support and resources to cancer patients and their families, please consider donating to the Cancer Support Home. Your gift enables us to offer these services free of charge and continue a legacy of making an impact in Northwest Arkansas.

To learn more about making a financial contribution to the Cancer Support Home, please visit the Washington Regional Medical Foundation website: <http://www.wregional.com/makeagift>



Find us on  
**Facebook**

1101 N. Woolsey Ave.  
Fayetteville, AR 72703  
479.521.8024

2706 E. Central Ave.  
Bentonville, AR 72712  
479.271.2257

[www.wregional.com/csh](http://www.wregional.com/csh)

**DONATE  
NOW!**